

CITY OF BRUNSWICK RIPARIAN SETBACK MAP

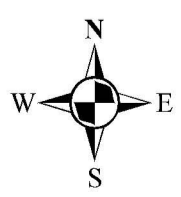
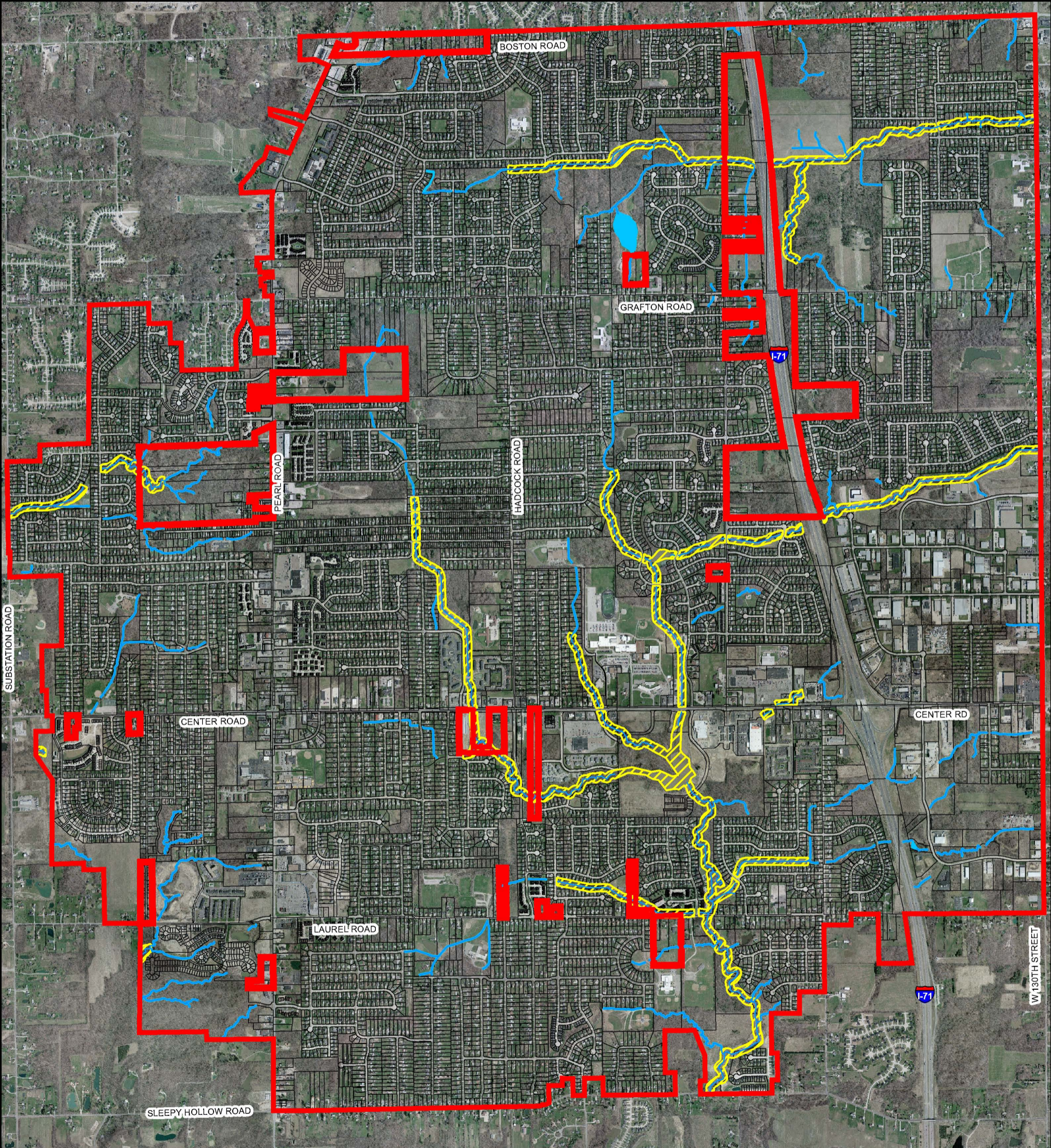
Notes:





1) Riparian Setbacks shall apply to all watercourses draining an area greater than or equal to 1/2 square mile, OR, less than 1/2 square mile, with a defined bed and bank.

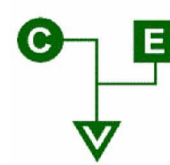
2) The riparian setback shall be 75 feet on each side of all watercourses draining more than 1/2 square mile.

3) The riparian setback shall be 25 feet on each side of watercourses that drain less than 1/2 square mile and have a defined bed and bank.

4) Refer to Chapter 1238 of the Brunswick Codified Ordinances for additional information.



-  Watercourse
-  25 Feet Setback
-  75 Feet Setback
-  Brunswick Border



Chagrin Valley Engineering, Ltd.
 22999 Forbes Road, Suite B
 Cleveland, Ohio 44146-5667
 440/439-1999
 fax 440/439-1969
www.cvelimited.com